

Photographs



Photo A: Floor drain in B & C Fasteners warehouse (146-150 North Beaver Street)



Photo B: Storage tank vent and fill pipes for unknown tank (left) and two 275-gallon heating oil ASTs (146-150 North Beaver Street)

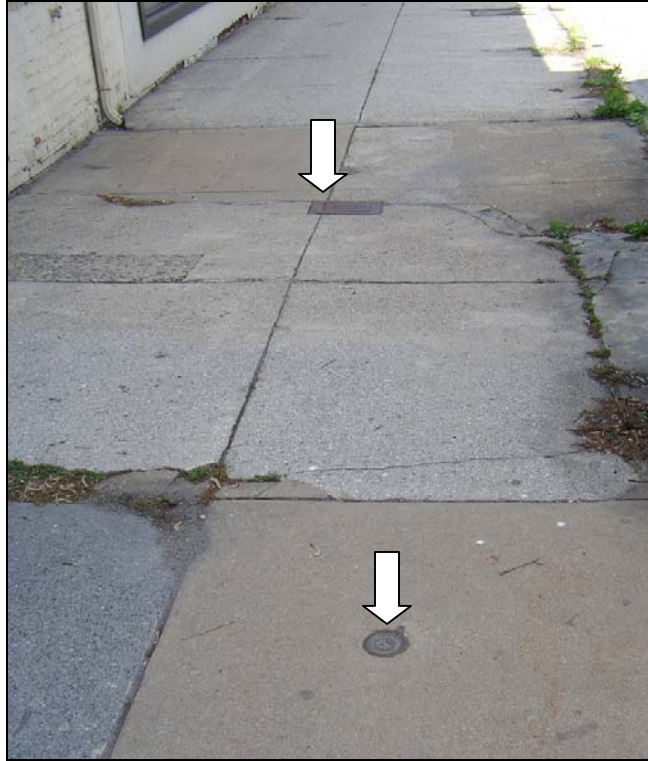


Photo C: Caps in sidewalk for abandoned heating oil UST (146-150 North Beaver Street)



Photo D: 300-gallon pigment tank on second floor (Keystone Color Works)



Photo E: 3,000-gallon pigment mixing tank on ground floor (Keystone Color Works)

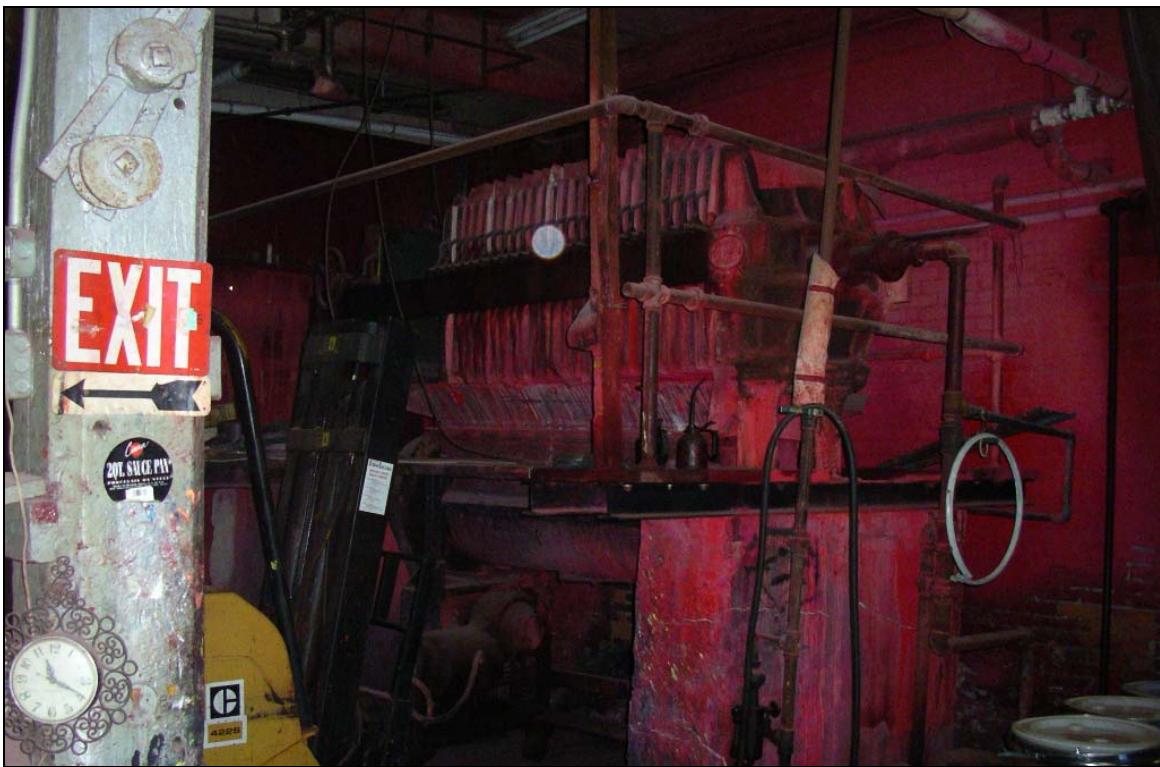


Photo F: Filter press for red pigments (Keystone Color Works)



Photo G: Concrete wastewater holding pit on ground floor (Keystone Color Works)



Photo H: One of three wastewater treatment tanks (Keystone Color Works)



Photo I: Exterior soils at foundation on west side of building (Keystone Color Works)



Photo J: Inground hydraulic lift at Weaver's Auto Body (208-236 North Beaver Street)



**Photo K: Large (left) and small (right) floor drain caps at Weaver's Auto Body
(208-236 North Beaver Street)**

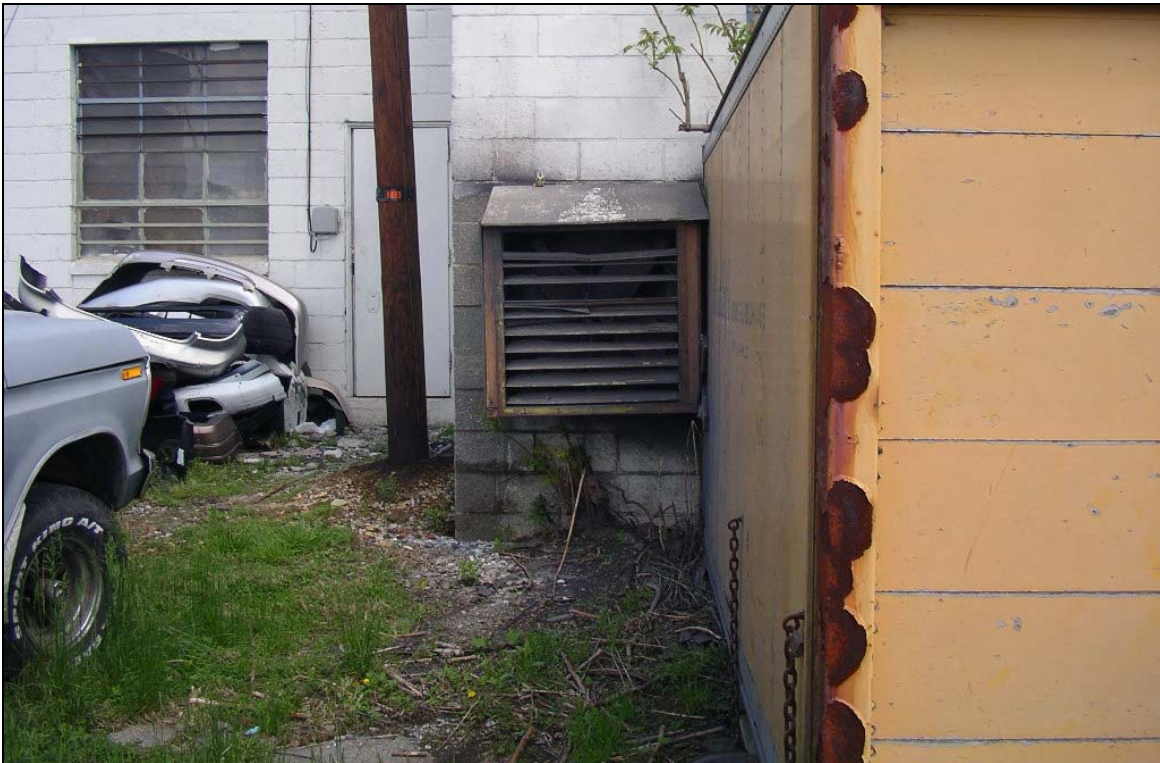


Photo L: Paint room exhaust fan at Weaver's Auto Body (208-236 North Beaver Street)



Photo M: Former paint storage trailer at Weaver's Auto Body (208-236 North Beaver Street)



Photo N: Scrap metal dumpster at Weaver's Auto Body (208-236 North Beaver Street)



**Photo O: Location of two 550-gallon gasoline USTs removed in 1987
(208-236 North Beaver Street)**



**Photo P: Location of five 20,000-gallon heating oil USTs tanks removed in 1987
(208-236 North Beaver Street)**



Photo Q: Ohio Blenders facility (Ohio Blenders)



Photo R: Location of former Hesperheide & Thompson feed mill (Ohio Blenders)



Photo S: Location of former Smyser & Son feed mill at North Pershing Avenue (Ohio Blenders)



Photo T: Location of four former oil ASTs for Smyser & Son (Ohio Blenders)



Photo U: Concrete pad at approximate location of former gasoline UST (Ohio Blenders)



Photo V: Non-utility transformers at northern edge of Ohio Blenders property (Ohio Blenders)



Photo W: Wooden coal trestle (York Rail)



Photo X: Remains of coal office and scale (York Rail)