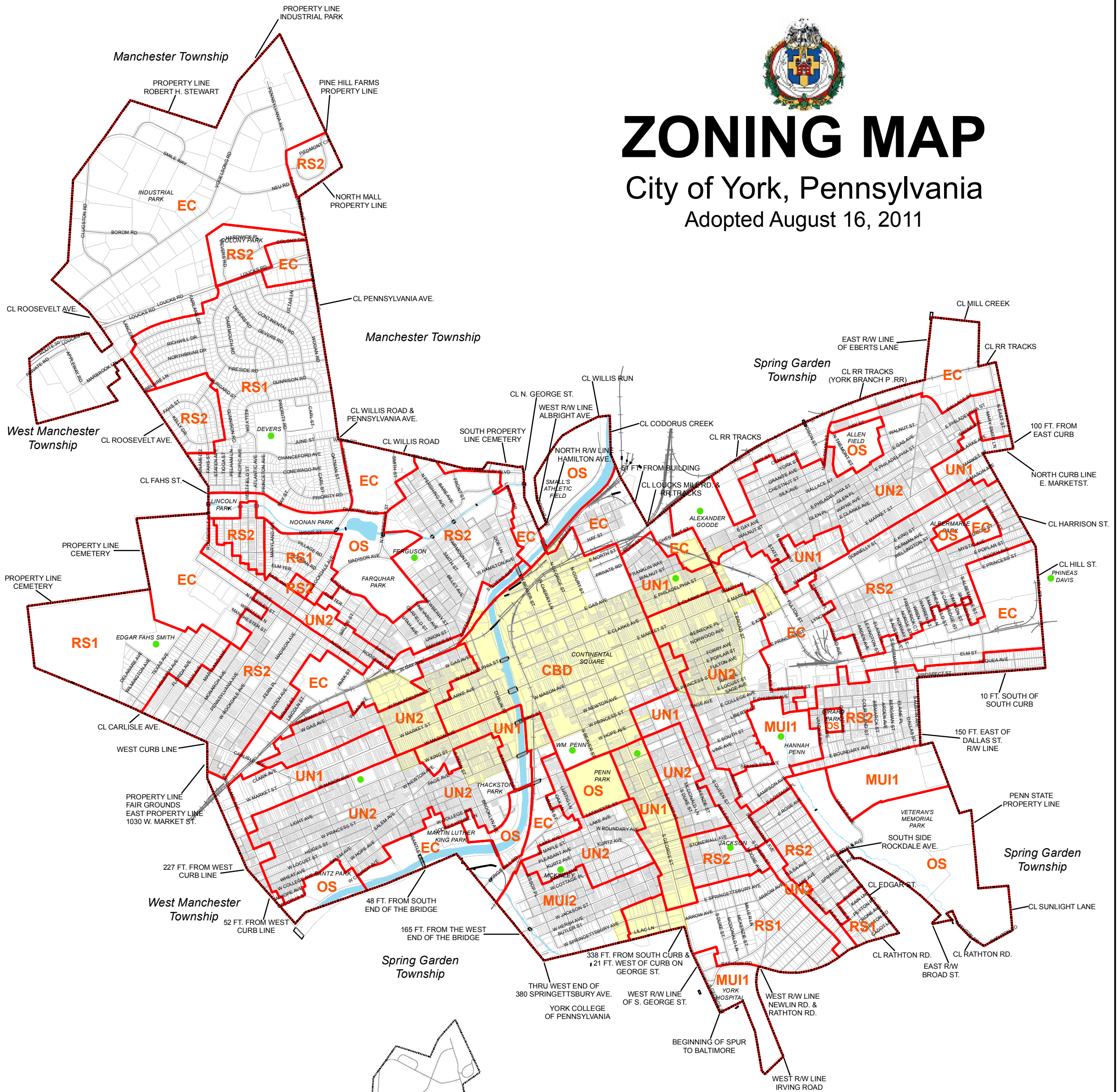




ZONING MAP

City of York, Pennsylvania

Adopted August 16, 2011



August 16, 2011

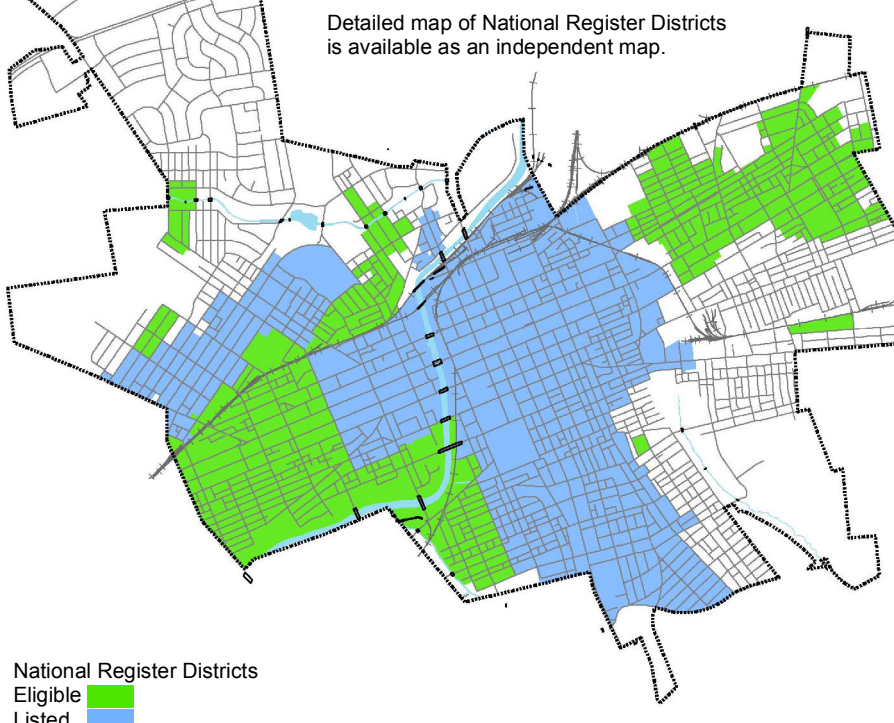
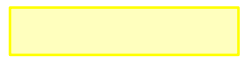
ZONING OVERLAY DISTRICTS

NATIONAL REGISTER HISTORIC DISTRICTS

These sections of York have been listed as Historic Districts. York has one of the largest urban districts in the Country and affords public recognition of the architectural and historical value of the City's buildings. Any Federally funded project in this area must be evaluated in respect to its impact on the historic and architectural character of this district before this indicated by the following boundary line.

HISTORICAL ARCHITECTURAL REVIEW BOARD DISTRICT

This area of the City is designated "Historic York." Applications for building permits here are additionally subject to review and approval by City Council through issuance of a certification of appropriateness. Reference: City of York Ordinance No. 31, passed September 15, 1970, as amended as indicated by the following pattern on the map.



National Register Districts
Eligible ■
Listed ■

Detailed map of National Register Districts is available as an independent map.

- City Boundary
- City School
- Proposed Zoning
 - CBD - Central Business District
 - EC - Employment Center District
 - MUI1 - Mixed-Use Residential Institutional District
 - MUI2 - Urban Residential Neighborhood District
 - OS - Open Space District
 - RS1 - Single-Family Detached Residential Conservation District
 - RS2 - Single-Family Attached Residential Conservation District
 - UN1 - Urban Mixed Residential Commercial District
 - UN2 - Urban Residential Neighborhood District
- Bridge
- Road
- Railways
- Waterways
- Historical Architectural Review Board Area

NOTES: Parcel Lines as of February 2005
Source: City of York Offices, City of York GIS Datasets, Pennsylvania Spatial Data Access, PennDOT, United States Census and community input.